

## CLASSROOMS

### Flexible Classrooms

Floor: 1st, 2nd, & 3rd

Features: Technology

Enhanced, Flexible Furniture

Base Layout: Lecture Style

Capacity: 40 person

Sq. Ft.: 1050

### Interactive Learning

Classrooms

Floor: 1st

Features: Technology

Enhanced, Flexible Furniture,

Active Learning Room, shared

screens with students at the

center

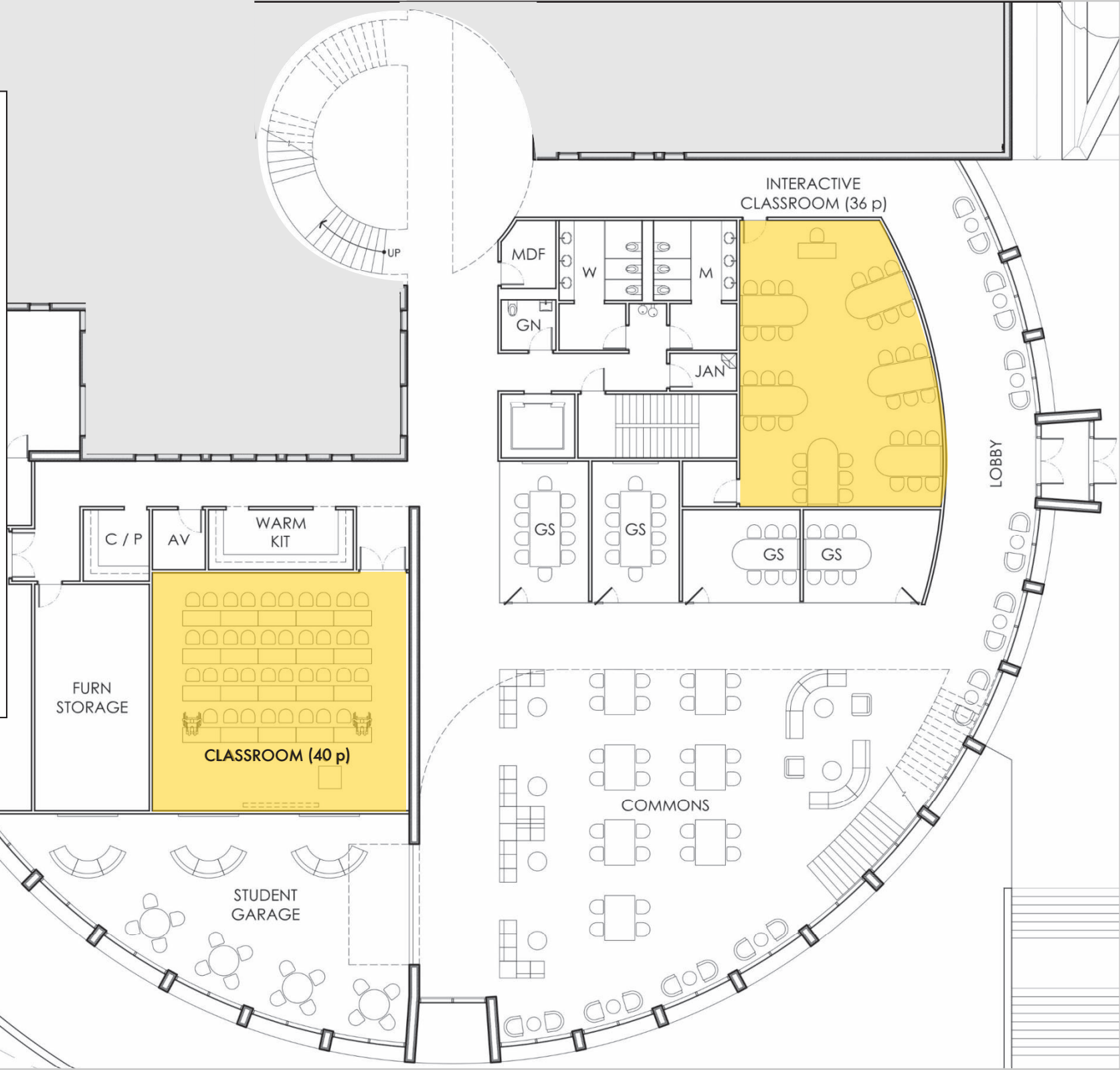
Base Layout: Active Group

Learning

Capacity: 40 person

Sq. Ft.: 1050

Renderings show preliminary concepts of the Peacock Hall addition space; designs are subject to final approval. Additional spaces are available. Contact Kyle Allen for additional images and information: [allenkb2@appstate.edu](mailto:allenkb2@appstate.edu).



## COMMUNITY-BUILDING

### Atrium / Event Commons

Floor: 1st

Features: Two-story atrium, with flexible furniture, designed with students in mind to allow them to stay in the building for the entirety of their day. This area can be used for special events.

Sq. Ft.: 3600

### Student Garage

Floor: 1st

Features: Flexible furniture with casual space for students to utilize for group work, relaxing between classes, and can be used for guest speakers and special events. This is a high visibility space.

Sq. Ft.: 750

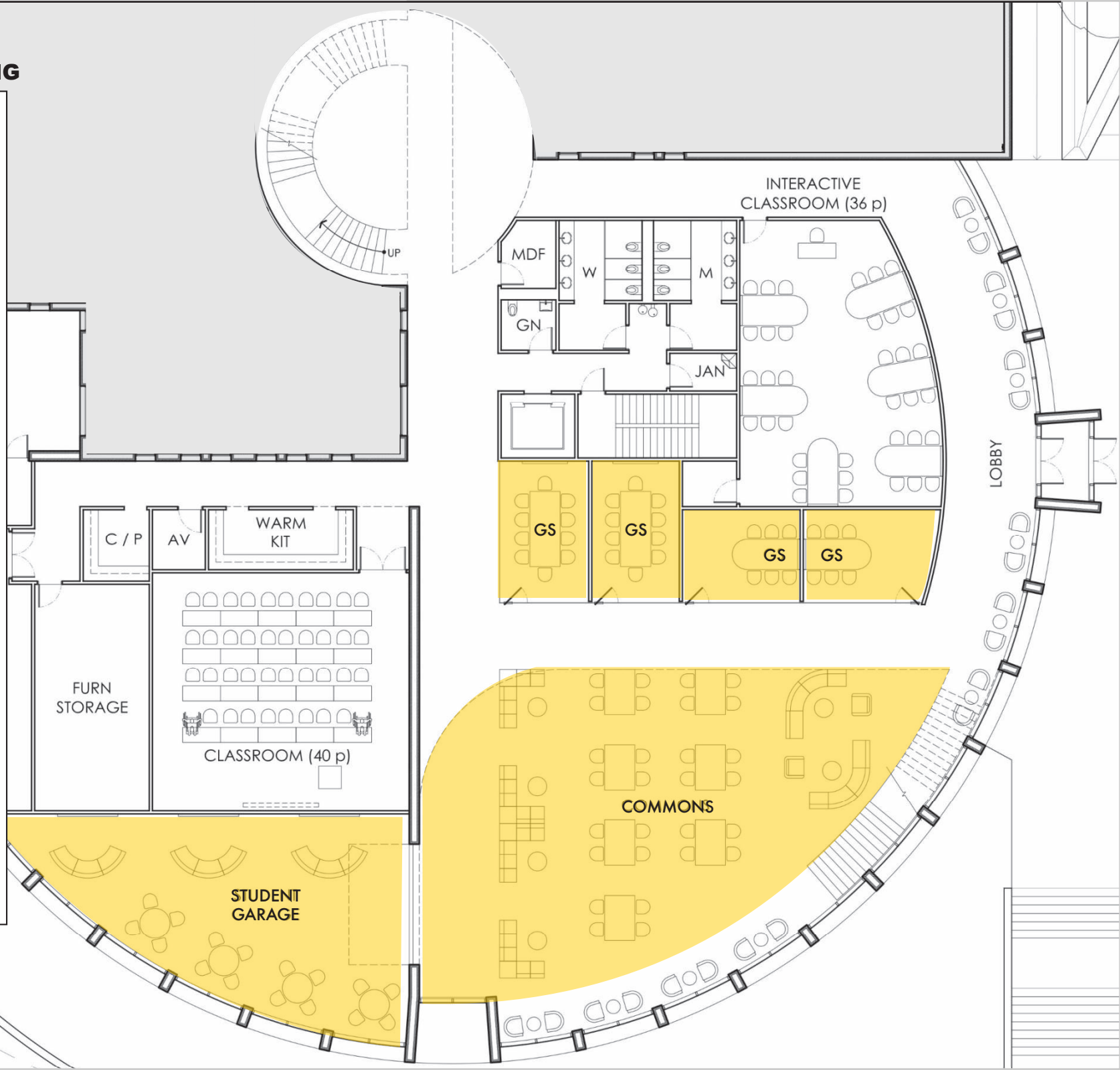
### Group Study Rooms

Floor: 2nd

Features: Technology enhanced study rooms where students can interview for jobs, work on group projects, and meet with one another. Designed for 4 - 6 students.

Sq. Ft.: 150

Renderings show preliminary concepts of the Peacock Hall addition space; designs are subject to final approval. Additional spaces are available. Contact Kyle Allen for additional images and information: [allenkb2@appstate.edu](mailto:allenkb2@appstate.edu).



## COMMUNITY-BUILDING

### Group Study Rooms

Floor: 2nd

Features: Technology enhanced study rooms where students can interview for jobs, work on group projects, and meet with another. Designed for 8 - 10 students.

Sq. Ft.: 200

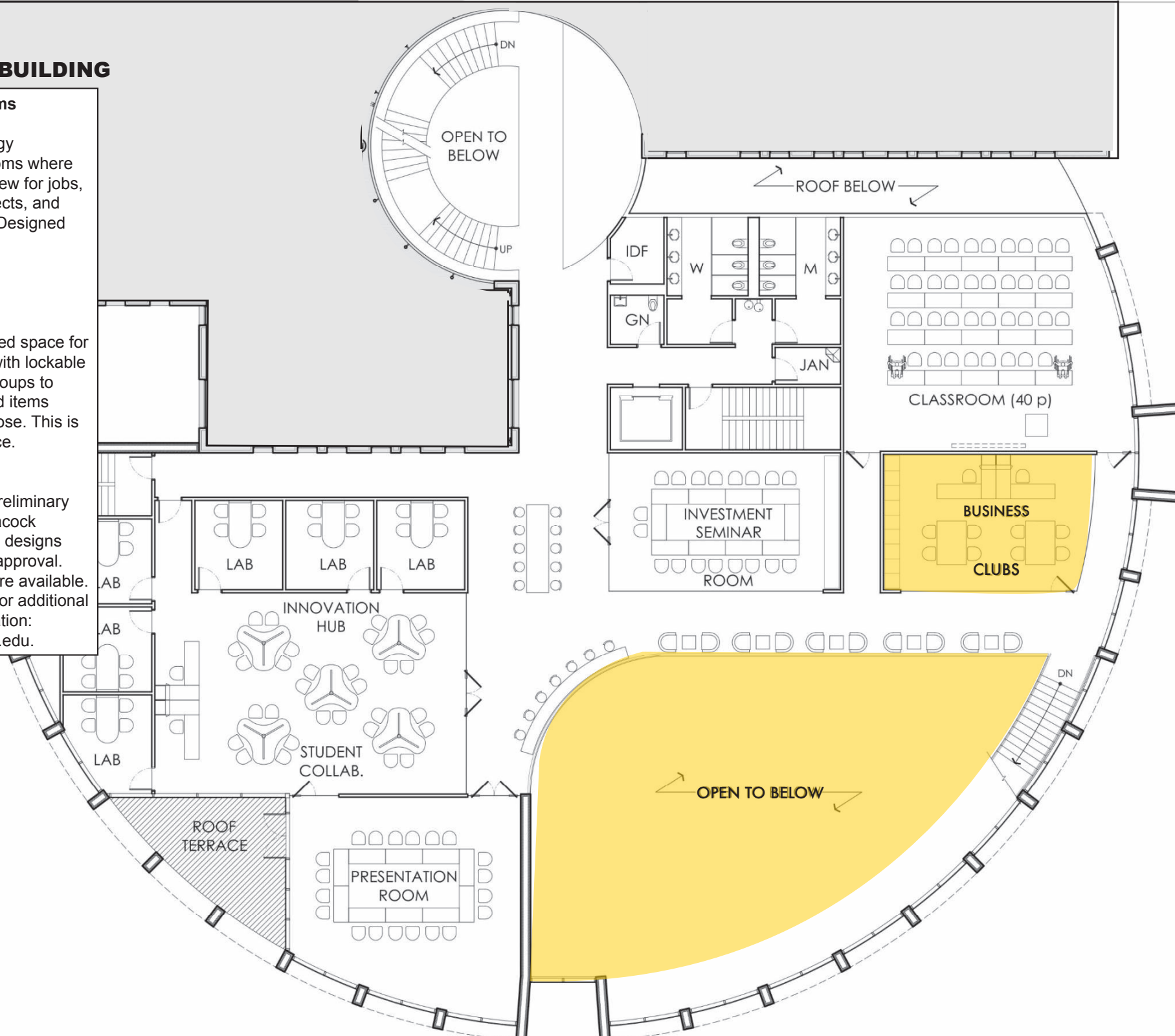
### Business Clubs

Floor: 2nd

Features: A dedicated space for all student groups with lockable areas for student groups to house materials and items critical to their purpose. This is a high visibility space.

Sq. Ft.: 500

Renderings show preliminary concepts of the Peacock Hall addition space; designs are subject to final approval. Additional spaces are available. Contact Kyle Allen for additional images and information: [allenkb2@appstate.edu](mailto:allenkb2@appstate.edu).





## INNOVATION HUB

### Innovation Hub

Floor: 2nd

Features: Multi-Purpose Lab Space, Highly Visible area, Presentation Room, and Student Collaboration Space  
Sq. Ft.: 3500

### Student Collaboration Space

Floor: 2nd

Features: Gathering area for students to work in groups and collaborate  
Sq. Ft.: 1200

### Investment Seminar Room

Floor: 2nd

Features: Technology-enhanced area where students learn investment techniques and financial planning and literacy  
Sq. Ft.: 700

### Presentation Room

Floor: 2nd

Features: State-of-the-art technology-enhanced conference room that can also act as a board room  
Sq. Ft.: 700

Renderings show preliminary concepts of the Peacock Hall addition space; designs are subject to final approval. Additional spaces are available. Contact Kyle Allen for additional images and information: [allenkb2@appstate.edu](mailto:allenkb2@appstate.edu).



## TERRACE

Floor: 2nd  
Features: Outside Terrace overlooking River Street and Peacock Parking Lot. Attached to the new Conference Room or Board Room, with catering possibilities  
Sq. Ft.: TBD

Renderings show preliminary concepts of the Peacock Hall addition space; designs are subject to final approval. Additional spaces are available. Contact Kyle Allen for additional images and information: [allenkb2@appstate.edu](mailto:allenkb2@appstate.edu).



## STUDENT SUPPORT

### Academic Advising & Career Services Suite

Floor: 3rd

Features: Offices, Conference Room

Sq. Ft.: 2020

### Academic Advising Offices

Floor: 3rd

Features: All are dedicated offices and have windows overlooking River Street

Sq. Ft.: 120

### Conference Rooms

Floor: 3rd

Features: Can hold up to 20 people and are in highly utilized areas. Will be exposed to corporate partners interviewing student candidates for jobs.

Sq. Ft.: 450

Renderings show preliminary concepts of the Peacock Hall addition space; designs are subject to final approval. Additional spaces are available. Contact Kyle Allen for additional images and information: [allenkb2@appstate.edu](mailto:allenkb2@appstate.edu).

